

### Main Features :-

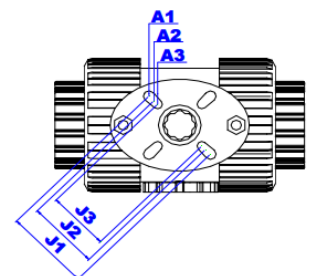
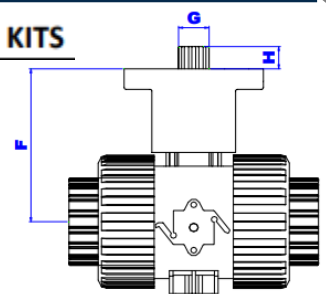
- Alternative bracket to the FIP PowerQuick
- Allows easy actuation of FIP VKD and TKD Ball Valves
- Available as kit only
- Available with pneumatic actuator
- Available with electric actuator
- Available with Star Drive
- Available with Square Drive



TYPE: FIP ASSEMBLY KIT

### DIMENSIONAL DRAWING OF THE BALL VALVE FIP TYPE VKD WITH MOUNTING KITS

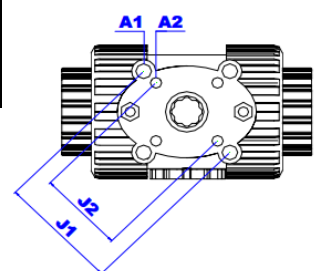
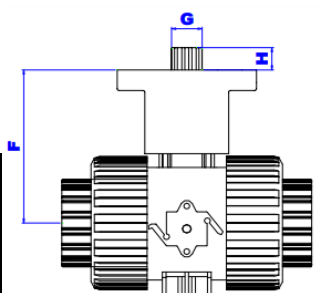
d	DN	F	G	H	A1	A2	A3	J1	J2	J3
16-20	10-15	64	*9	9	∅ 6,1	∅ 5,1	∅ 5,1	50 (F05)	42 (F04)	36 (F03)
16-20	10-15	64	*11	11	∅ 6,1	∅ 5,1	∅ 5,1	50 (F05)	42 (F04)	36 (F03)
16-20	10-15	64	*14	15	∅ 6,1	∅ 5,1	∅ 5,1	50 (F05)	42 (F04)	36 (F03)
25	20	70	*11	11	∅ 6,1	∅ 5,1	∅ 5,1	50 (F05)	42 (F04)	36 (F03)
25	20	70	*14	15	∅ 6,1	∅ 5,1	∅ 5,1	50 (F05)	42 (F04)	36 (F03)
32	25	74	*11	11	∅ 6,1	∅ 5,1	∅ 5,1	50 (F05)	42 (F04)	36 (F03)
32	25	74	*14	15	∅ 6,1	∅ 5,1	∅ 5,1	50 (F05)	42 (F04)	36 (F03)
40	32	91	*11	11	∅ 9	∅ 6,5	-----	70 (F07)	50 (F05)	-----
40	32	91	*14	15	∅ 9	∅ 6,5	-----	70 (F07)	50 (F05)	-----
50	40	97	*14	15	∅ 9	∅ 6,5	-----	70 (F07)	50 (F05)	-----
50	40	97	*17	19	∅ 9	∅ 6,5	-----	70 (F07)	50 (F05)	-----
63	50	112	*14	15	∅ 9	∅ 6,5	-----	70 (F07)	50 (F05)	-----
63	50	112	*17	19	∅ 9	∅ 6,5	-----	70 (F07)	50 (F05)	-----



DN15, DN20 AND DN25 VALVE

### DIMENSIONAL DRAWING OF THE BALL VALVE FIP TYPE VKD WITH MOUNTING KITS

d	DN	F	G	H	A1	A2	A3	J1	J2	J3
16-20	10-15	64	*9	9	∅ 6,1	∅ 5,1	∅ 5,1	50 (F05)	42 (F04)	36 (F03)
25	20	70	*9	9	∅ 6,1	∅ 5,1	∅ 5,1	50 (F05)	42 (F04)	36 (F03)
32	25	74	*9	9	∅ 6,1	∅ 5,1	∅ 5,1	50 (F05)	42 (F04)	36 (F03)
40	32	91	*11	11	∅ 9	∅ 6,5	-----	70 (F07)	50 (F05)	-----
50	40	97	*11	11	∅ 9	∅ 6,5	-----	70 (F07)	50 (F05)	-----
63	50	112	*11	11	∅ 9	∅ 6,5	-----	70 (F07)	50 (F05)	-----



DN32, DN40 AND DN50 VALVE

ISO 9001:2015 Accredited Company

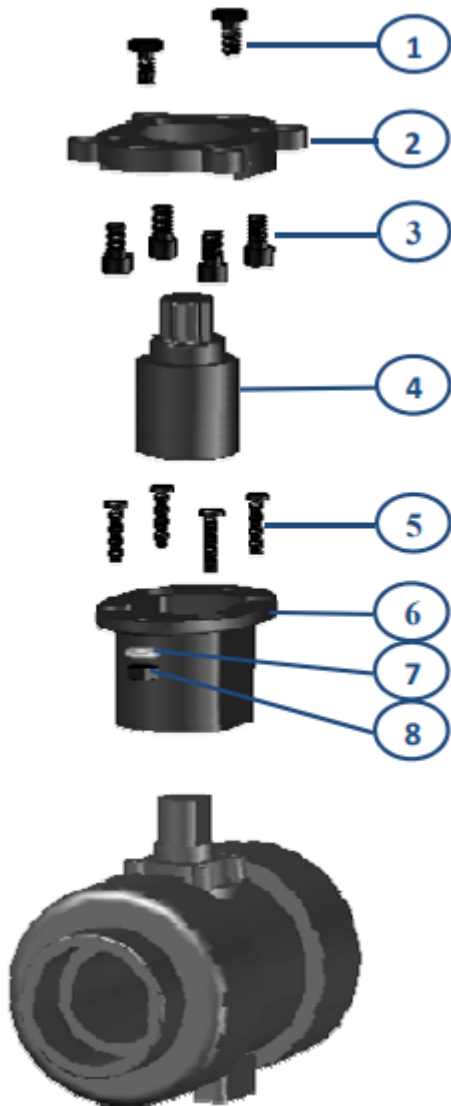
Tel: +44(0)1386 552369

Fax: +44(0)1386 554227

sales@allvalves.co.uk

www.allvalves.co.uk

Allvalves Online Ltd, Automation House, Unit 2, Pershore, WR10 2DF UK



SIZE	DESCRIPTION	MATERIAL
1	SCREW DIN933	A2 S.STEEL
2	ADAPTER PLATE	PP-GR
3	SCREW DIN912	A2 S.STEEL
4	DRIVE ADAPTER	PA-GR
5	SCREW RF81T	A2 S.STEEL
6	MOUNTING PLATE	PP-GR
7	WASHER DIN125	A2 S.STEEL
8	NUT DIN934	A4 S.STEEL

CODE KIT	
DN15	MM00359
DN20	MM00360
DN25	MM00361
DN32	MM00362
DN40	MM00363
DN50	MM00364

SIZE	DN10 - DN15	DN20	DN25	DN32	DN40	DN50	UNITS
	D16 - D20	D25	D32	D40	D50	D63	
	3/8" - 1/2"	3/4"	1"	1 1/4"	1 1/2"	2"	
1	M6x16	M6x16	M6x16	M6x16	M6x16	M6x25	2
2	F03-F04-F05	F03-F04-F05	F03-F04-F05	F05-F07	F05-F07	F05-F07	1
3	M5x10	M5x10	M5x10	M6x12	M6x12	M6x12	4
3	M6x12	M6x12	M6x12	M8x20	M8x20	M8x20	4
4	*9	*11	*11	*11	*14	*14	1
4	*11	*14	*14	*14	*17	*17	1
4	*14	-----	-----	-----	-----	-----	1
5	M3,5x8	M3,5x8	M3,5x8	M4x16	M4x16	M4x16	4
6	DN10 - DN15	DN20 - DN25	DN20 - DN25	DN32 - DN40	DN32 - DN40	DN50	1
7	M6	M6	M6	M6	M6	M6	2
8	M6	M6	M6	M6	M6	M6	2

ISO 9001:2015 Accredited Company

Tel: +44(0)1386 552369

Fax: +44(0)1386 554227

sales@allvalves.co.uk

www.allvalves.co.uk

Allvalves Online Ltd, Automation House, Unit 2, Pershore, WR10 2DF UK